

PLEASE SUPPORT OUR ANNUAL TOY DRIVE

FOR YOUR INFORMATION



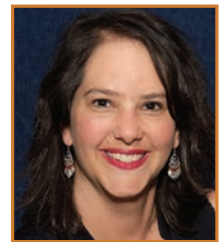
ABOUT THE PROGRAM

“The Impact of the Aging Population on Your Medical Practice”

Between 2016 and 2037, the older adult population in Guilford County will grow by 44.8% – while the total population will grow by only 15.1%. The growth of the aging population will significantly increase the demand for home and community-based services. What are your options when you advise your older adult patients who need home health care? What are the community-based service options available to you and your older adult patients? How can home and community-based service options empower YOU and your older adult patients? Join us for a presentation on aging trends and the home- and community-based resources that are well-positioned to help improve your patients’ overall care.

ABOUT THE SPEAKER

JODI KOLADA, is director of business and caregiver outreach at Well-Spring Solutions. Jodi has a bachelor’s degree in Psychology from Rutgers and a master’s degree in Gerontological Studies from the University of Miami (Ohio). She is a member of GMDM.

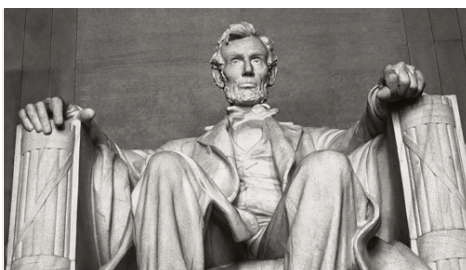


JODI KOLADA

The annual GMDM toy drive for The Salvation Army is a community service project under the direction of the Community Service Committee. The toys are distributed to children of all ages who are served by The Salvation Army. Captain Matt Hedgren, with The Salvation Army, will be joining us for lunch.

HISTORICAL ORIGINS OF AN AMERICAN HOLIDAY

In 1863, President Abraham Lincoln proclaimed Thanksgiving as a federal holiday, celebrated on the fourth Thursday of November. Other presidents before him, including George Washington, had also declared days of Thanksgiving. But it wasn’t until Lincoln’s proclamation that Thanksgiving became an annual holiday nationwide.



NEXT MEETING

RESERVATIONS ARE REQUIRED

Date and Time:

Wednesday, November 20, 2019
 11:30–1:00 p.m.

Buffet line opens at 11:20 a.m.

Meeting Place:

Starmount Forest Country Club

Program:

The Impact of the Aging Population on Your Medical Practice

Speaker:

Jodi Kolada, MGS
 Director of Business and Caregiver Outreach,
 Well•Spring Solutions

Cost: \$20.00 for a guest

PLEASE BRING YOUR UNWRAPPED TOYS TO THE NOVEMBER 20th MEETING!



MESSAGE FROM THE PRESIDENT

Jamie Alston

The holidays are upon us! Wow, I cannot believe these are our last two months before we begin a brand-new decade. I know this time of year can be so stressful for many. It can be especially stressful for the struggling family trying to provide even a small Christmas for their children. This is why the toy drive with The Salvation Army is so important.

Each Christmas, The Salvation Army, with the help of hundreds of volunteers and donors, provides toys, food and clothing to our neighbors in need and care for those otherwise forgotten. While you may think your donation of one toy will not go very far, I can assure you that the child who may not have received anything will be overwhelmed by your generosity.

In 2018, The Salvation Army processed over 2,000 Christmas applications. The program impacted the lives of 4,721 local children and distributed almost 35,000 toys and articles of clothing, and more than 5,000 coats.

Please remember to bring your donation of a new, unwrapped toy to our November meeting and make a difference in someone's life.

"A hundred years from now, it will not matter what my bank account was, the sort of house I lived in, or the kind of car I drove ... but the world may be different because I was important in the life of a child."

— Forest Witcraft, Teacher/Scholar

Jamie

GETTING TO KNOW YOU – ACTIVE MEMBER

NAME AND PRESENT POSITION:

TERESA RAKESTRAW has been the office manager at Wendover OB/GYN & Infertility, Inc., for the past 31 years.



GMDM COMMITTEES SERVED ON/ JOINED:

Enrichment Seminar, Golf, Bosses' Night, Resume Resources, Scholarship,

Hospitality. Joined GMDM in 1991.

EDUCATION: Associate degree from King's College.

HOMETOWN/FAMILY: I grew up in the Madison-Mayodan area. Married to my husband Larry for 30 years. I have two daughters: Tristan (works in finance), and Taylor (senior at UNCW in nursing). Dog, Jaxx, and cat, Lily.

HOBBIES: Cooking, shopping and travel.

I WOULD LIKE PEOPLE TO

REMEMBER ME AS: Kind, caring, compassionate and a loyal friend to all.

COMFORT FOOD(S): Anything seafood!

FAVORITE TRAVEL SPOT:

Anywhere that has a beach: Mexico, Florida Gulf Coast or Ocean Isle.

COMMENTS ABOUT GMDM:

I have enjoyed being part of this wonderful organization all these years. I enjoy the monthly meetings, networking and the knowledge obtained from the excellent programs that are provided. I am honored to be part of a local organization that gives back to the community.

OUR SPOTLIGHT THIS MONTH

IS ON:



For 45 years, Wendover OB/GYN & Infertility, Inc. has been treating women of all ages throughout the Piedmont Triad to a lifetime of exceptional care by working with low- and high-risk pregnancies, osteoporosis and everything in-between. The highly trained health professionals – including physicians,

PIEDMONT
PRINTING & GRAPHICS, INC.

We do it all!

Printing, Graphics, Apparel & Promotional Products

- Great personal service
- Free typesetting on any existing business form

317 S. Westgate Dr. • Ste. A
Greensboro, NC 27407
(off Dundas near Pomona)

(336) 273-2120
Danny Rudisill, Op-Ed

midwives and nurse practitioners – combine a personal touch with state-of-the-art technology and innovation to create an insightful, personalized approach to health care. The practice provides obstetrics, gynecology, infertility, in-office surgical procedures, daVinci robotic and laparoscopic surgery, incontinence evaluation, weight loss consults, mammograms, ultrasound and laboratory services that are accredited, ensuring that not only is the staff qualified, but that the equipment meets the highest standards for diagnostic images, as well as patient testing, comfort and privacy.

Our mission is to support women's health care through all decades of life by providing a warm and friendly environment for all of our patients and to provide the most qualified health care professionals to provide excellent care.

The practice staff includes:
Richard J. Taavon, MD, FACOG
Sheronette A. Cousins, MD FACOG
Vaishali R. Mody, MD FACOG
Kelly A. Fogleman, MD, FACOG
Susan Almquist, MD, FAGOG
Beth Lane, WHNP-BC
Julie Fisher, WHNP
Tanya Bailey, MSN, CNM, FACNM
Daniela Paul, MSN, CNM
Meredith Sigmon, MSN, CNM



Ask The Lawyer

By Karen McKeithen Schaeede

Have a question about the law?
Send your questions to
KSchaede@ConnorsMorgan.com

Q: We have a great deal of patients with mental health issues. What can I disclose?

A: The U.S. Department of Health and Human Services, Office of Civil Rights, issued guidance in 2018 regarding personal health information (PHI) for patients who are suffering with mental health issues and what information can be shared.

Health care providers can disclose to other health care providers any personal health information (PHI) dealing with mental health and the patient. This includes:

- prescriptions and monitoring of those prescriptions
- treatment modalities
- frequency of treatments
- results of tests.

The provider can provide:

- a summary of diagnosis
- treatment plan,
- signs and symptoms
- prognosis and progress.

An individual's authorization is needed to disclose psychotherapy session notes, however.

This article is for informational purposes only and not for the purpose of providing legal advice. You should contact your attorney to obtain advice with respect to any particular issue or problem. The information contained in this article does not create an attorney-client relationship between Connors Morgan PLLC and the reader.

MEMBERS:

Please bring your UNWRAPPED toys to the November 20th meeting. Please support the Salvation Army Toy Drive!



Cone Health Women's Hospital Welcomes

Ravi Shankar, MD

Board certified in maternal-fetal medicine, obstetrics and gynecology, Dr. Ravi Shankar specializes in providing high-risk pregnancy care.

The Cone Health Center for Maternal Fetal Care team includes perinatologists, genetic counselors, sonographers and registered nurses specially trained in providing care for both mother and fetus in complicated pregnancies. Our specialists partner with obstetricians and midwives to provide the best possible outcome for your patients.



CONE HEALTH
Center for Maternal Fetal Care

For scheduling, call (336) 832-6986.
Visit ConeHealth.com for more information.

801 Green Valley Road, Greensboro, NC

Hours: Monday - Friday, 8 a.m. - 5 p.m.



Local Business Leader Joins Greensboro Imaging Leadership Team

Kelli Collins has been named the Chief Operating Officer for Greensboro Imaging.

Kelli has served as the VP of Operations for Surgical Care Affiliates (SCA) since 2005. Prior to this, she served as Director of Operations for SCA and an Administrator at HealthSouth Greensboro Specialty Surgical Center. Kelli is the Founder and President of the Ambulatory Surgery Center Association in NC.

“We’re so glad to have Kelli here. She is an experienced healthcare professional and well-respected business leader who shares our commitment to patient care and the greater Greensboro community.”

—Natalie Boner
Director of Engagement at Greensboro Imaging



greensboroimaging.com

MONTHLY E-COURAGEMENT

PROVIDED BY RICH SCHLENTZ, FOUNDER OF EXTRAORDINARY! INC.
 VISIT RICH AT WWW.EXTRAORDINARYINC.COM
 CONTACT HIM AT RICH@EXTRAORDINARYINC.COM
 336-317-4603



HAVE YOU BEEN APPRECIATED TODAY?

If you haven't ... you're not alone.

Of all the things you've ever caught yourself complaining about, getting too much appreciation has probably not been one of them.

Culturally, we often restrict appreciation to special occasions.

At home, it may not be expressed until a birthday, Thanksgiving, an anniversary or, when it's too late, a funeral.

At work, it may not be expressed until the next cookout, holiday party or the aptly named "Employee Appreciation Day."

Appreciation isn't a one-day thing, it's an everyday thing.

Stand-alone activities don't cut it.

What matters most is what happens in-between those special occasions.

Appreciation is most effective when given in small, consistent doses over time.

It's the gift that shows up when you're sincerely listened to, recognized, sought out, encouraged, coached, invested in, cheered on and complimented.

If you're not getting the appreciation you desire from your leader:

- Give it to those you lead.
- Give it to those you influence.
- *Most importantly*, give it to yourself.

Today.



THANKS TO OUR ADVERTISER

GREENSBORO IMAGING

Greensboro Imaging has provided imaging services to Triad residents for more than 30 years. They have three locations, including the Breast Center of Greensboro Imaging.

Services include:

- 3-D mammography
- Bone density testing
- CT scans
- Traditional MRI, wide-bore MRI, the only high-field 3Tesla MRI, and Abbreviated Breast MRI
- Spine imaging
- Back pain injections
- Ultrasound
- Virtual colonoscopy
- Varicose vein therapy
- Elastography – liver function studies.

In addition to the offerings listed, they also:

- participate with most insurance companies and their insured pricing is competitive.
- utilize the expertise of the board-certified, subspecialty-trained radiologists of Greensboro Radiology.
- currently utilize the Cone Health EMR system known as Epic. What does this mean to you and your patients? One timeline and one chart, with easy access.

The GMDM members are Mary Jean Nelson and Allison Fuqua.



THE PUZZLER???

What is a newspaper opinion piece called?

1. Look for the answer in one of the ads.
2. Identify the answer and the ad in which the answer appears.
3. Email the answer and name the ad in which the answer appears to Shay Rumsey at shayrumsey@northstate.net

N

Imaging care on your schedule

Novant Health Imaging Triad

Finding time for an X-ray or CT scan can be hard to do — but Novant Health is making it easier with evening hours and walk-in appointments. At Novant Health Imaging Triad, you can schedule your scan during convenient weekday hours until 8 p.m., or opt for a same-day or walk-in visit. You'll also find lower prices than those at some competitors and board-certified radiologists who provide a remarkable experience at an unparalleled value.

To schedule an appointment, call 336-272-2162.

NOVANT HEALTH

© Novant Health, Inc. 2018

GWS-305651

WELCOME TO OUR NEW MEMBERS

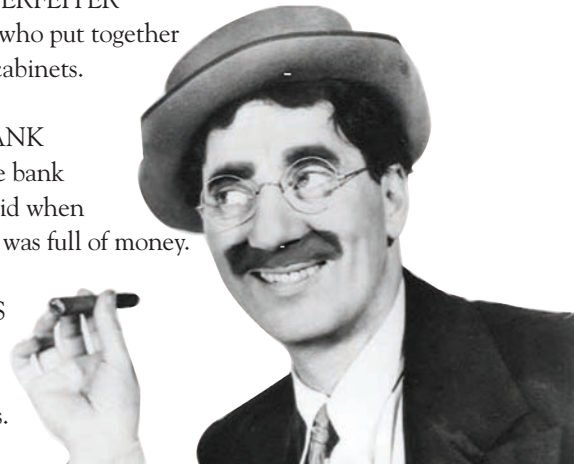
WANDA WILLIAMS, Personal Care Inc.
 STEPHANIE STALEY, Guilford Community Care Network
 MIKE MEITL, First Citizens Bank
 BENJAMIN FLEMR, Atlantis Dentistry
 KIM ROSENBAUM, Groat Eyecare Associates
 NICOLE SENEAL, Triad Foot and Ankle Center
 HOWARD DRIGGERS, ComForCare

ADVERTISE IN THE GMDM NEWSLETTER

If you want other members to know how your company can help them, tell them in an ad in the GMDM newsletter. One of the ways we encourage readership is through the Puzzler contest, which requires readers to look through all ads in the newsletter to find the ad in which the answer is hidden. When it is hidden in your ad, you not only get the perk of having people read your ad carefully, but you also receive a free info-commercial about your business at the luncheon. This is great exposure! And the cost of an ad is minimal. Where else can you get a full year of ads and an info-commercial for \$250? Contact Rita Smith if you would like more information: rsmith@FirstPointResources.com

JUST FOR FUN!

1. ARBITRATOR
A cook that leaves Arby's to work at McDonald's.
2. BERNADETTE
The act of torching a mortgage.
3. BURGLARIZE
What a crook sees through.
4. AVOIDABLE
What a bullfighter tries to do.
5. COUNTERFEITER
Workers who put together kitchen cabinets.
6. LEFT BANK
What the bank robbers did when their bag was full of money.
7. HEROES
What a man in a boat does.
8. PARASITES
What you see from the Eiffel Tower.
9. PARADOX
Two physicians.
10. PHARMACIST
A helper on a farm.





Cone Health Medical Group
Partnering for exceptional care.

BRUCE BARTON
 Cone Health | CHMG
Director of Business Development / Practice Enhancement

Direct Dial: 336.663.5032 | Cell: 336.944.2969
Website: conehealth.com

REMINDER



**PLEASE BRING
 YOUR NEW,
 UNWRAPPED
 TOYS TO THE
 MEETING ON
 NOVEMBER 20**



PACE OF THE TRIAD

A Program of All-Inclusive Care for the Elderly



PACE of the Triad is a non-profit, community-based health and human services agency committed to the wellness of seniors and to improving the autonomy and quality of their lives.

For a tour or inservice for your staff, contact GMDM Member, Nedra Baldwin:

1471 E. Cone Blvd.
 Greensboro, NC 27405

336-550-4040

www.pacetriad.org
info@pacetriad.org



PENNYBYRN
 TRANSITIONAL REHAB
Restoring Strength & Returning Home

Schedule Your
PERSONAL TOUR

Call 336-821-6548

100%
 of Patients

are very satisfied with their rehabilitation experience, the highest possible score.

1315 GREENSBORO ROAD • PENNYBYRNLIVING.ORG



PO Box 10735
Greensboro, NC 27404-0735

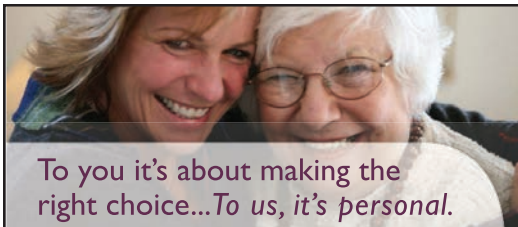


Targeted Marketing
for Your Company

- ▼ Advertising
- ▼ Websites
- ▼ Brochures
- ▼ Social Media
- ▼ Publicity
- ▼ Newsletters
- ▼ Logos



336-292-6041
deanna@thompsononline.biz
View an online portfolio at:
ThompsonOnline.biz



To you it's about making the
right choice...*To us, it's personal.*

Whether you are looking for someone to help you
or a loved one a few hours a week, or need more
comprehensive assistance, Home Instead can help.

- Companionship
- Meal Preparation
- Light Housekeeping
- Transportation/Errands
- Personal Care
- Dementia Care

Each Home Instead Senior Care franchise office is independently owned and operated. © 2014 Home Instead, Inc.

Call for a free, no-obligation appointment
366.294.0081

4615 Dundas Drive, Suite 101
Greensboro, NC 27407



To us, it's personal.
HomeInstead.com/311

SERVICES FOR ADULTS AT HOME

WellSpring
SOLUTIONS

- ▶ In-Home Care
- ▶ Adult Day Care
- ▶ Caregiver Support



well-springsolutions.org • 336-545-5377



Practicing Commercial
Real Estate by the
Golden Rule

Bill Strickland, CCIM
Commercial Real Estate Broker/
REALTOR®
bstrickland@bipinc.com
336.369.5974



CCIM IR www.bipinc.com